

## 3. Maintenance

### 3.1 Electronic indicator

If your trap came bundled with an electronic indicator please follow the instructions in the electronic indicator user guide on how to install and configure this indicator device.

### 3.2 Replacement of a trap

A trap needs to be exchanged when the visual indicators - when applicable - start changing color, or when the electronic indicator displays a percentage of 10% or less.

### 3.3 Click-on connector

Regularly check both the big and small O-rings on the Click-On connectors for hair cracks. The slightest leak may allow moisture, oxygen and hydrocarbons to enter the system and contaminate the gas.

## 4. Disposal



Saturated traps should not be placed in household waste bins. Please check local regulations for information about the disposal of chemical waste in your area.

Never re-condition a big trap: for recycling, please contact your local supplier.

## 5. Overview

Super-Clean™ Big Traps are suited for the purification of non-corrosive gases with low contamination concentrations to a better as 6.0 grade (99,99990%) purity.

Super-Clean™ Big Traps are connected to an appropriate genuine Click-On Connector which is installed into the gas line.

## 6. Technical Specifications

Trap Type	Capacity	Outlet Concentration
<b>Oxygen</b>	2.25 liter oxygen	< 50 ppb
<b>Moisture</b>	105 gram moisture	< 0.1 ppm
<b>Hydrocarbon</b>	180 gram organic compounds (depending on impurities)	< 0.1 ppm
<b>Combi (Moisture + Hydrocarbons)</b>	52.5 gram moisture 90 g organic compounds (depending on impurities)	Moisture < 0.1 ppm Organics < 0.1 ppm
<b>Combi (Moisture + Oxygen)</b>	1.12 liter oxygen 52.5 gram moisture	Oxygen < 50 ppb Moisture < 0.1 ppm
<b>Triple</b>	1 liter oxygen 35 gram moisture 60 g organic compounds (depending on impurities)	Oxygen < 50 ppb Moisture < 0.1 ppm Organics < 0.1 ppm
<b>Carbondioxide</b>	225 gram carbon dioxide	< 0.1 ppm

**RoHS compliant**

All filter cartridges are packed under Argon, except for the He-specific filter which is packed under Helium.

**Maximum pressure:** 11 bar (160 psi or 1100 kPa)

**Maximum flow:** 25 L/min.

**Gas Quality at outlet:** > 99,9999%

## 7. Safety Information

- The maximum concentration of Oxygen allowed in the gas is 0.5%. (valid only for each filter packed with O<sub>2</sub>-adsorbent and O<sub>2</sub>-indicator)
- Maximum Gas-System pressure should never exceed 11 bar (160 psi or 1100 kPa).
- The total system design must be considered to ensure safe, trouble-free performance. Proper installation, operation, and maintenance are the responsibilities of the system designer and user.

## 8. Ordering Information

### Click-On Connectors

<b>CO2001</b>	Click-On Connector Set - 1/4" Brass
<b>CO2002</b>	Click-On Connector Set - 1/8" Brass
<b>CO2010</b>	Click-On Connector Set - 1/4" SS
<b>CO2011</b>	Click-On Connector Set - 1/8" SS
<b>CO2020</b>	Click-On Double Connector

### Replacement Traps

<b>SGT-COBT1001M</b>	Moisture Big Trap (750 cc)
<b>SGT-COBT1002M</b>	Oxygen Big Trap (750 cc)
<b>SGT-COBT1003M</b>	Hydrocarbon Big Trap (750 cc)
<b>SGT-COBT1004M</b>	Combi (Moisture + Oxygen) Big Trap (750 cc)
<b>SGT-COBT1007M</b>	Combi (Moisture + Hydrocarbon) Big Trap (750 cc)
<b>SGT-COBT1010M</b>	Combi (Moisture + Carbon dioxide) Big Trap (750 cc)
<b>SGT-COBT1005M</b>	Triple (Moisture+Oxygen+Hydrocarbon) Big Trap (750 cc)
<b>SGT-COBT1006M</b>	Triple (Moisture+Oxygen+Hydrocarbon) He Big Trap (750 cc)
<b>SGT-COBT1008M</b>	Triple (Moisture+Oxygen+Hydrocarbon) H <sub>2</sub> Big Trap (750 cc)

### Installation Kits

For ordering a Click-On Inline Big Trap Installation Kit (Big Trap + 2 Click-On Connectors + Wall-mounting clamps) add one of the following suffixes to the Replacement Trap part number:

- S8** for 1/8" Stainless Steel Connectors
- S4** for 1/4" Stainless Steel Connectors
- B8** for 1/8" Brass Connectors
- B4** for 1/4" Brass Connectors

For example to order a Moisture Big Trap Installation Kit with 1/8" Stainless Steel Connectors, use the following part number: SGT-COBT1001M-S8

### Accessoires

<b>CO3001</b>	Replacement O-ring set for Click-On Connectors
<b>CO3002</b>	Wall-mounting Clamp Set for Click-On Big Trap
<b>SGT-E0030</b>	Electronic Indicator Kit for Big Traps

**SGT**   
SCIENTIFIC GLASS TECHNOLOGY

## Click-On Big Trap (750 cc)

### Instructions for use



### Scientific Glass Technology

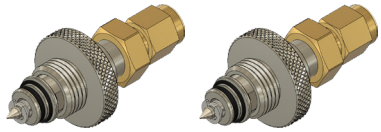
**The Netherlands**  
Arnesteinweg 23,  
NL - 4338 PD Middelburg  
P.O. Box 8027,  
NL - 4330 EA Middelburg  
Tel: +31 118 623095  
Fax: +31 118 639536

**Singapore**  
83 Science Park Drive,  
# 01-01 The Curie  
Singapore Science Park 1  
Singapore 118258  
Tel: +65 6777 5825  
Fax: +65 6774 4956

E-mail: [admin@sgtnl.com](mailto:admin@sgtnl.com)  
[www.sgt-nl.com](http://www.sgt-nl.com)

# 1. Installation of the Click-On Connectors

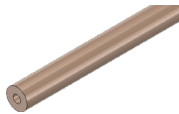
Re-usable Click-On Connectors are available for 1/8" and 1/4" outer tubing sizes and both sizes are available in stainless steel or brass.



## 1.1 Important information before you start

- Never install brass connectors on stainless steel tubing to avoid leakage.
- Installation of the connector should always be done by trained personnel.
- After installation do not forget to perform a reliable leak test using an electronic leak detector.
- Only use genuine click-on connector parts.

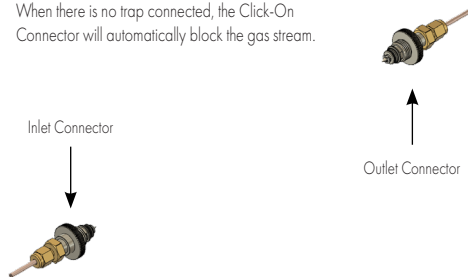
1. Switch off the incoming gas
2. Disconnect the gas line from the analytical instrument



Cut the gas line using an appropriate metal tubing cutter.

3. Plumb the Click-On connectors into each end of the gas line.

When there is no trap connected, the Click-On Connector will automatically block the gas stream.



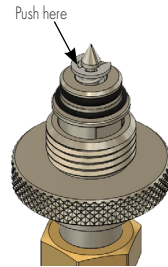
4. Turn the carrier gas on and flush the gas line with pure carrier gas, advised pressure: 90 psi.

# 2. Installation of a Big Trap

## 2.1 Important information before you start

- Never install an Oxygen Big Trap in a gas line for air. It will result in instant saturation!
- Make sure that the temperature of the replacement trap is more or less identical to the temperature of the (already installed) Click-On Connectors on your gas line to avoid any leakage in connections. If temperature is not identical, use at least one hour stabilization time in the same room as the connectors.

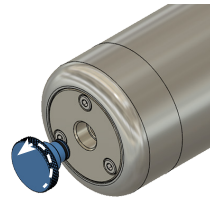
## 2.2 Install the inlet side of the trap



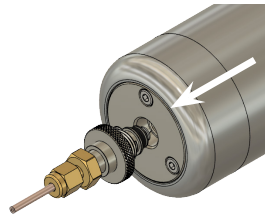
Push here

For new installation:  
Flush the inlet connector by pushing down the needle valve. Please note: sharp edges!

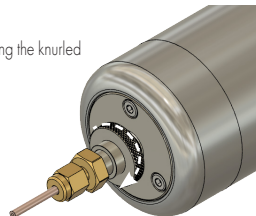
Remove the blue closing plug from the inlet of the trap by turning the plug counter clockwise.



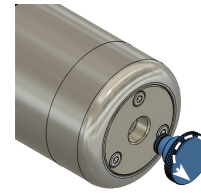
Position the trap into the inlet connector.



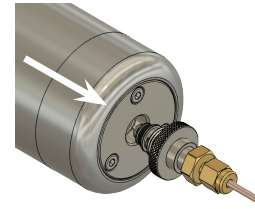
Tighten the connector by turning the knurled ring clockwise.



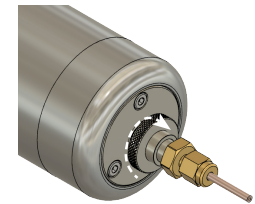
## 2.4 Install the outlet side of the trap



Remove the blue closing plug from the outlet of the trap by turning the plug counter clockwise.



Position the trap into the outlet connector.



Tighten the connector by turning the knurled ring clockwise.

For new installation: Flush the trap / whole system for 15 min. with pure carrier gas, advised pressure: 90 psi and then mount the outgoing carrier gas line back to the analytical system.

After installation do not forget to perform a reliable leak test using an electronic leak detector.

## 2.5 Recommended mounting position

Gas traps should be mounted in a vertical position to ensure proper contact of the gas with the adsorbent.

